

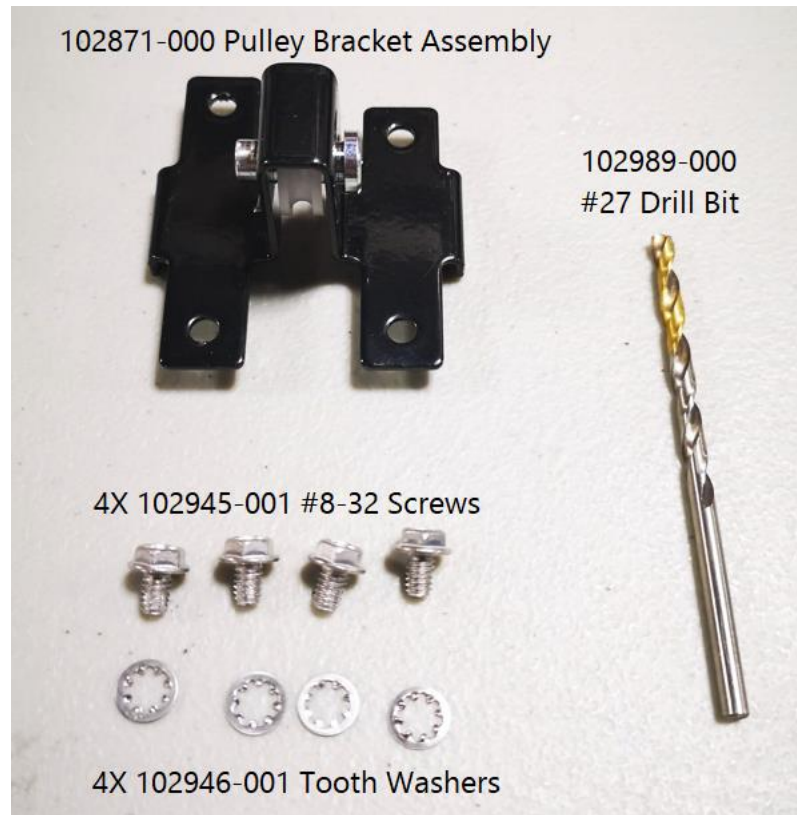
# DOC – WI – PULLEY BRACKET REPLACEMENT INSTRUCTIONS [102985-000]

Version.Issue	Date	Author	Description	Approver
1.0	Apr 10, 2023	NS	Initial release	MY



## Items & Tools Required

- Cordless/electric drill
- Torque wrench with 1/4" socket, set to 25 in-lbs of torque.
- Needle nose pliers
- 1/2" wrench/snips/cutters for pulley tab removal
- 102984-000 Pulley Bracket Replacement Kit
  - 1X 102871-000 Pulley Bracket (with pre-assembled pulley wheel)
  - 4X 102945-001 #8-32 X .25" Screws
  - 4X 102946-001 #8 Internal Tooth Washers
  - 1X 102989-000 #27 Drill Bit (.144" Diameter)





## Procedure Summary

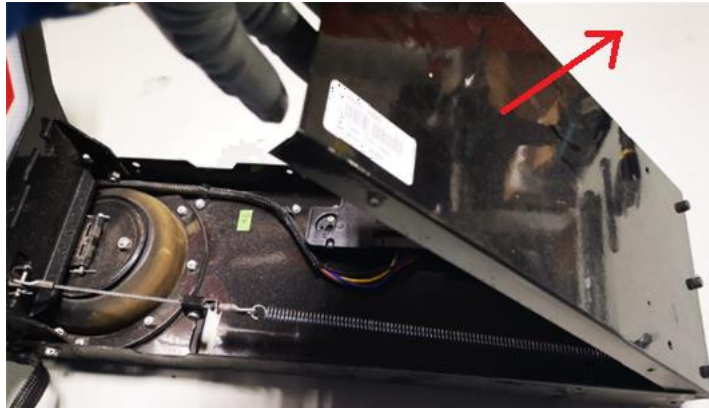
1. Remove cover (6 screws).
2. Remove spring.
3. Remove broken pulley tab.
4. Drill out 4 screw holes using replacement pulley bracket as guide.
5. Screw down replacement pulley bracket with wire rope cable in place. Use supplied screws and tooth washers. Required installation torque is 25 in-lbs.
6. Reattach spring.
7. Reattach cover (6 screws).

## Detailed Procedure

1. Removing the cover:
  - a. Manually open the stop arm blade to give yourself access to the screws securing the cover.
  - b. Unfasten the 6 sheet metal screws:



- c. Pull off the cover, revealing the interior assembly:



2. Removing the spring:

- a. Unhook the fixed end of the spring first (right hand side). Recommendation is to pull the spring with your left hand to relieve tension, and then use pliers in your right hand to remove the spring hook from the tab.

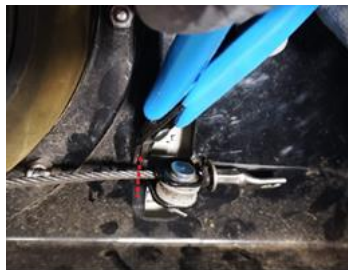


- b. Unhook the other end of the spring from the wire rope lug.

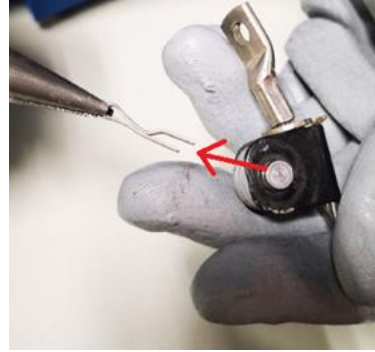


3. Remove the broken pulley tab bracket:

a. If the pulley tab is still partially attached to the base, remove it by either cutting it out using snips/cutters or you can break the tab off by bending it back and forth with a wrench:



b. Remove the pulley wheel & clevis pin by pulling out the cotter pin with pliers:



4. Drilling the pilot holes:

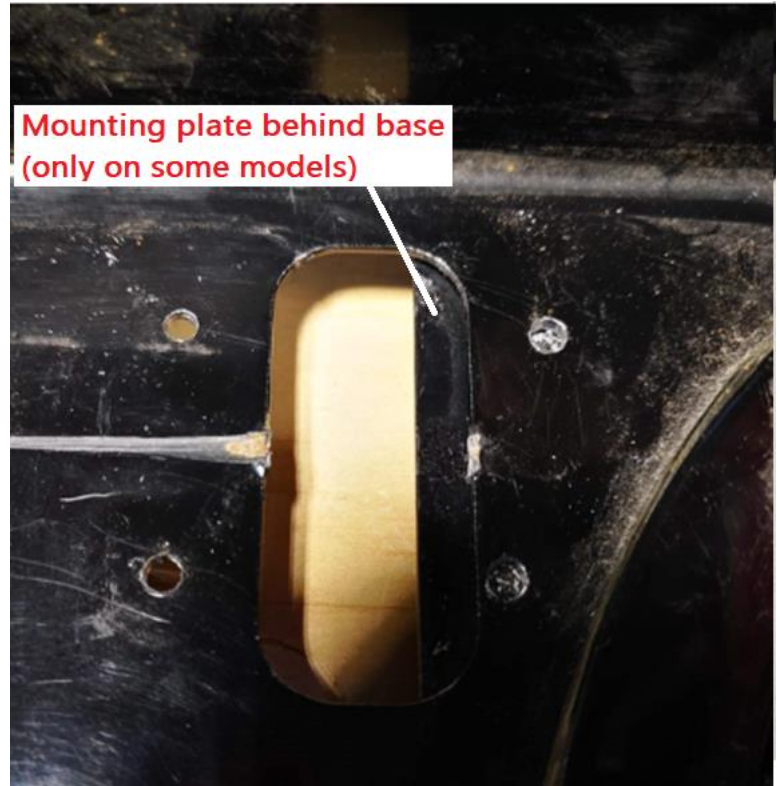
a. Press fit the 102871-000 Replacement Pulley Bracket Assembly into the opening where the pulley tab used to be, as pictured below. The pulley bracket has 2 outside flanges bent downwards that secure it in place. Note that the pulley bracket is not symmetric and must be in the correct orientation (the shorter leg positioned near the diaphragm). If your model of stop arm has a mounting plate under the base, the outside flanges will bend the plate slightly when installed. This is expected and not a cause for concern:







- a. Using the pulley bracket as a guide, drill out 4 pilot holes using the supplied drill bit. you do not need to drill through the mounting plate under the base (if your model of stop arm includes one):



5. Installing the replacement pulley bracket:

- a. With the wire rope in position, reinsert the pulley bracket into the opening:





b. Screw down the pulley bracket in 4 locations using the supplied screws and tooth washers. Take caution if using a cordless/electric driver to lower the clutch setting so as not to over-torque the screws.



c. Finish screw installation using a torque wrench set to 25 in-lbs.

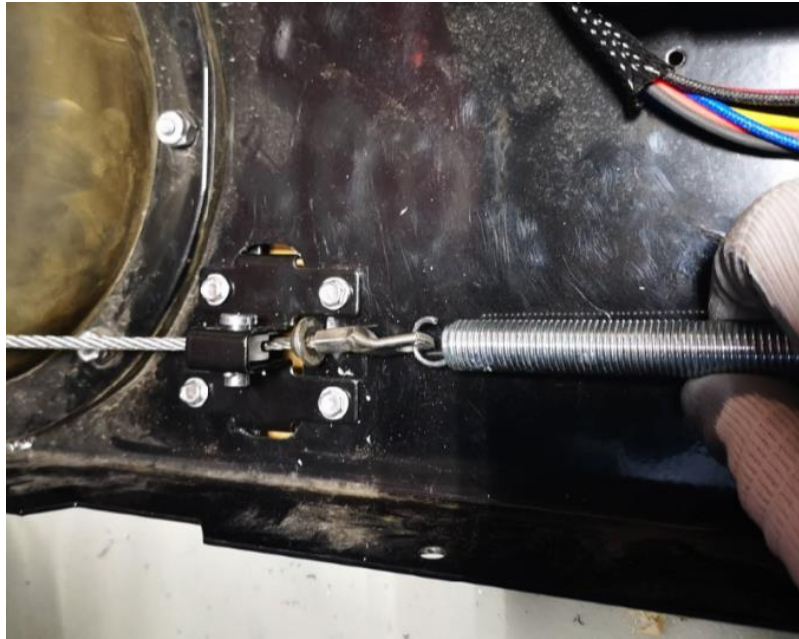






6. Reattaching the spring:

- a. Hook one end of spring back onto the wire rope lug.



- b. Using the same method as in step 2, reattach the other end of the spring to the base tab.





7. Reattach cover (6 screws):

